




Intro to A&P

Animal Anatomy and Physiology

Unit 1

- What are the basic terminology, direction terms, and general plan of an animal's body?

Essential Question



WHAT IS ANATOMY AND PHYSIOLOGY?

- Definition:
 - The form and structure of the body.
 - How it looks and where it is
- Types:
 - Microscopic
 - Must be seen using a microscope
 - Cells and tissues
 - Gross
 - Also called macroscopic
 - Can be seen by the unaided eye

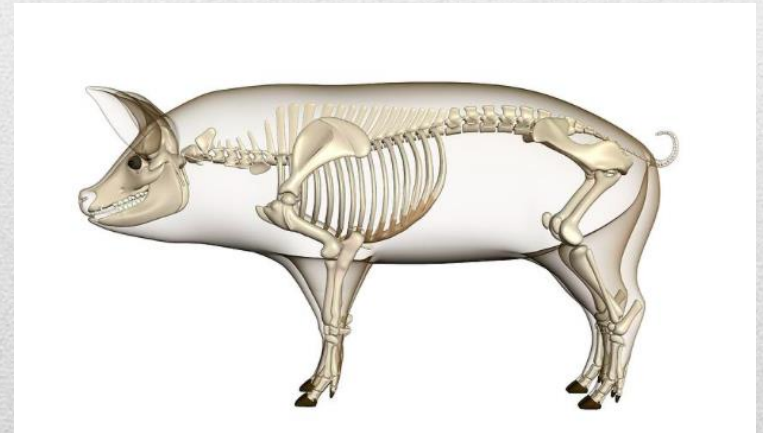
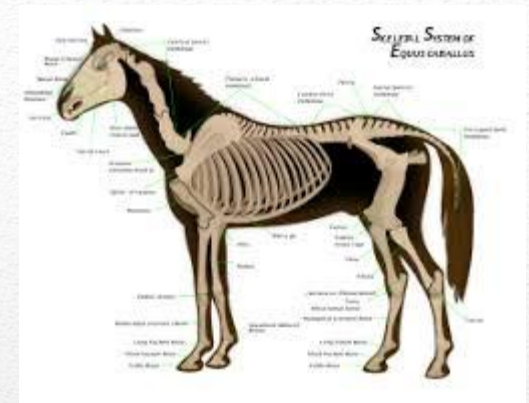
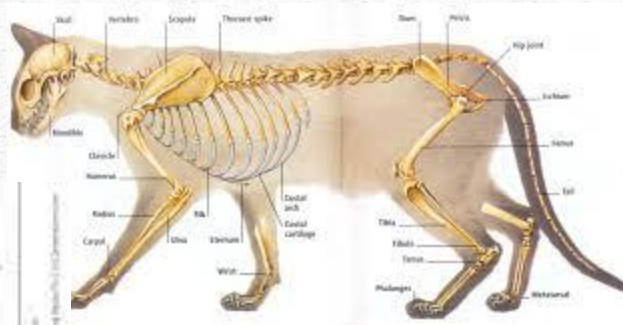
Anatomy

- Definition:
 - The function of the body
 - What it does and how it works

Physiology



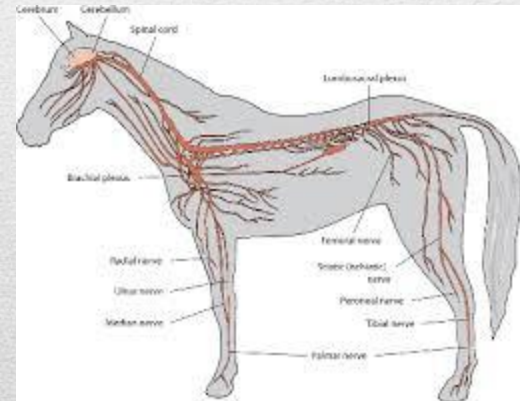
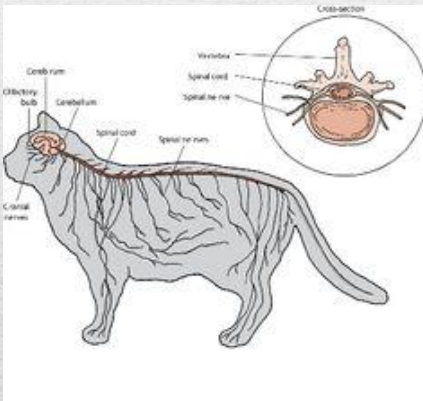
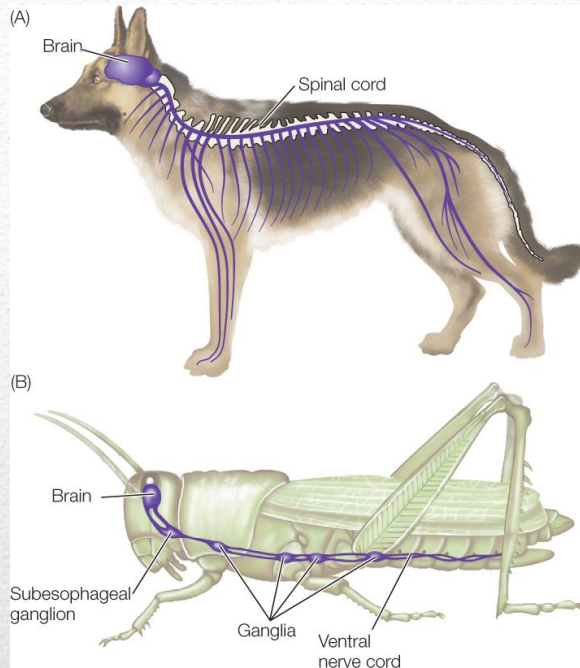
**WHAT ARE THE MAIN SYSTEMS
OF THE BODY AND THEIR
MAJOR COMPONENTS?**



Skeletal System

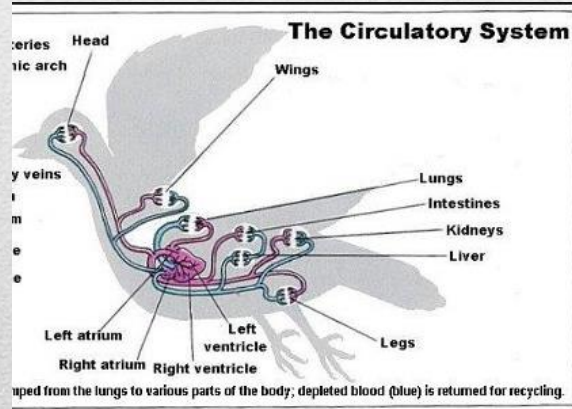
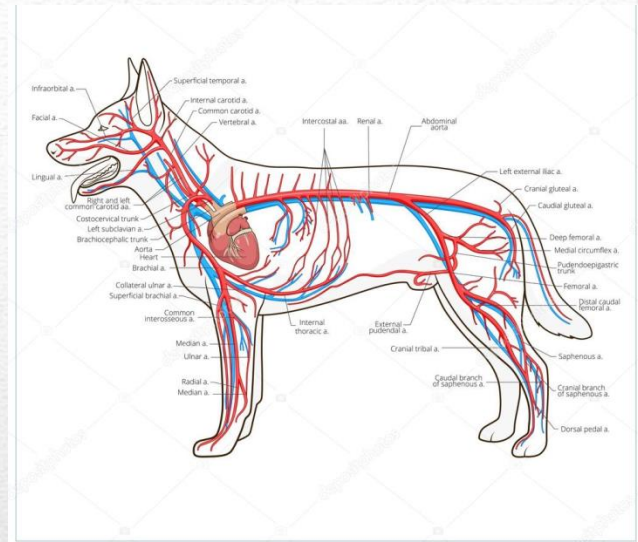
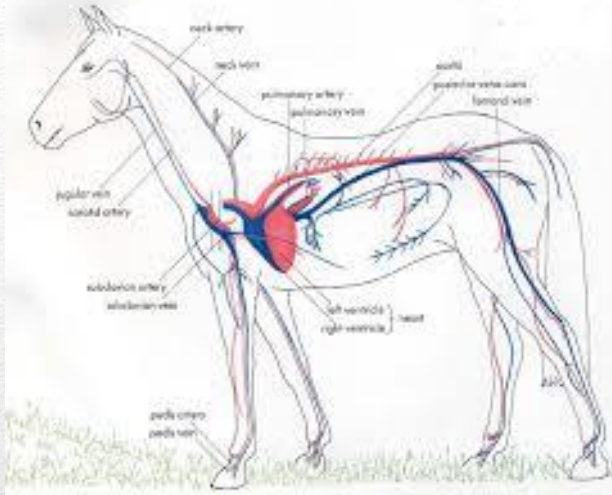


Integumentary System

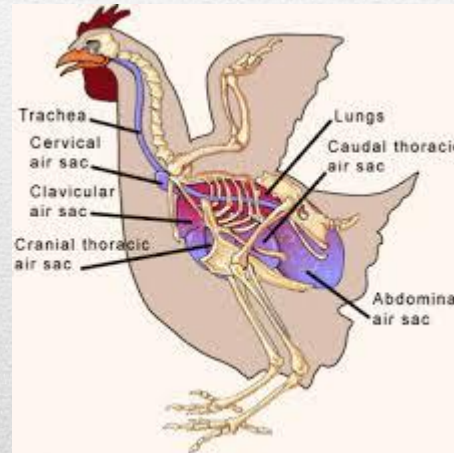
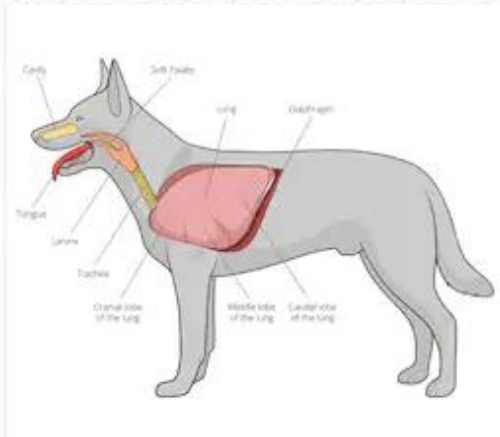


Nervous System

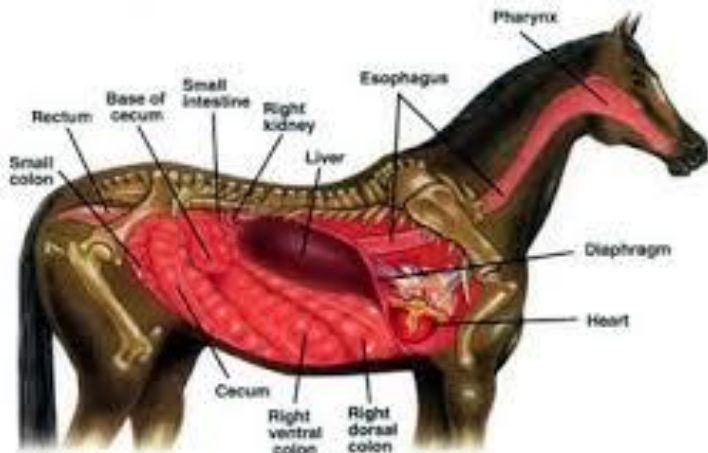
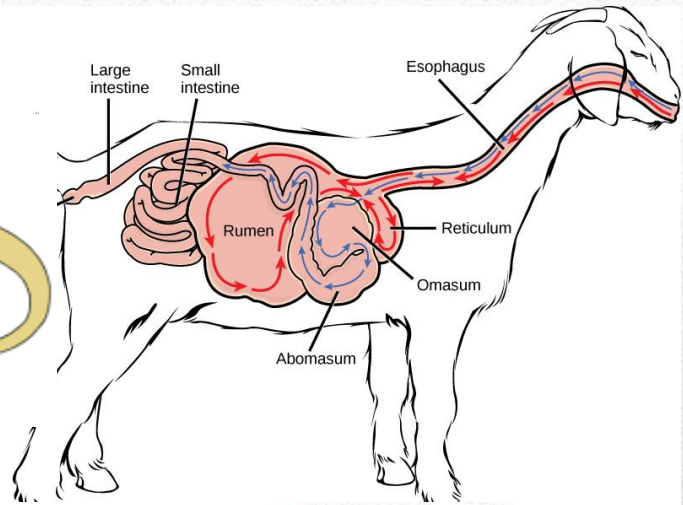
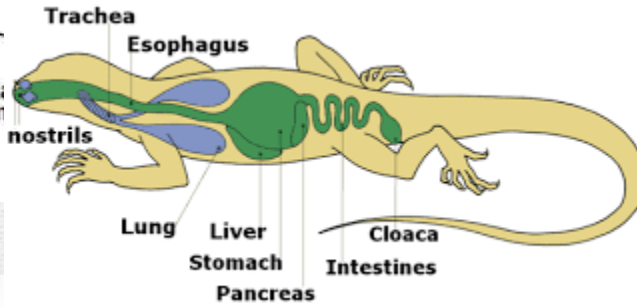
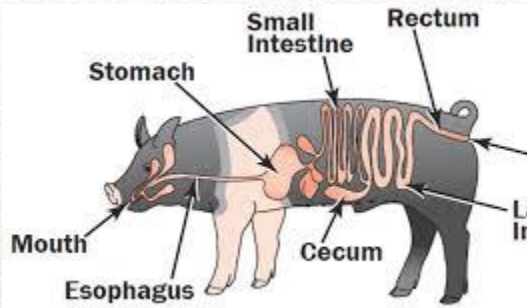
Veins and arteries



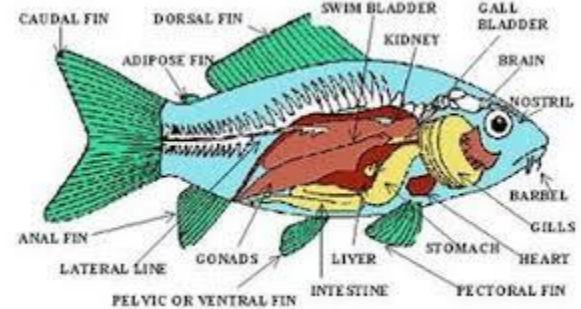
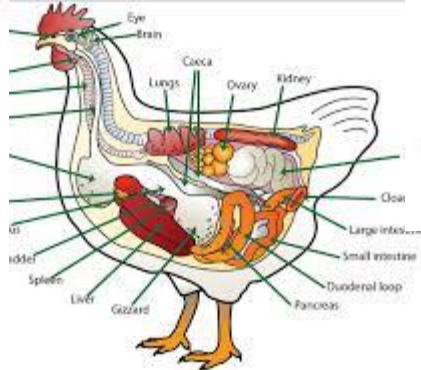
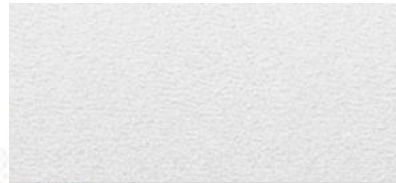
Cardiovascular System



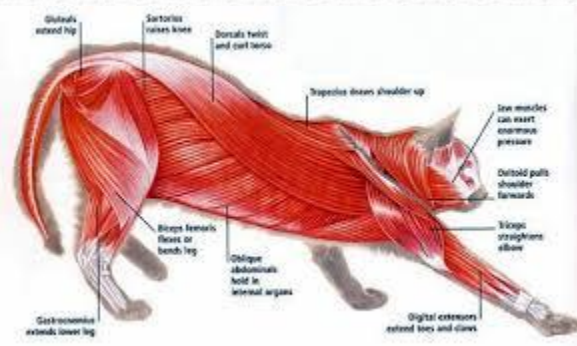
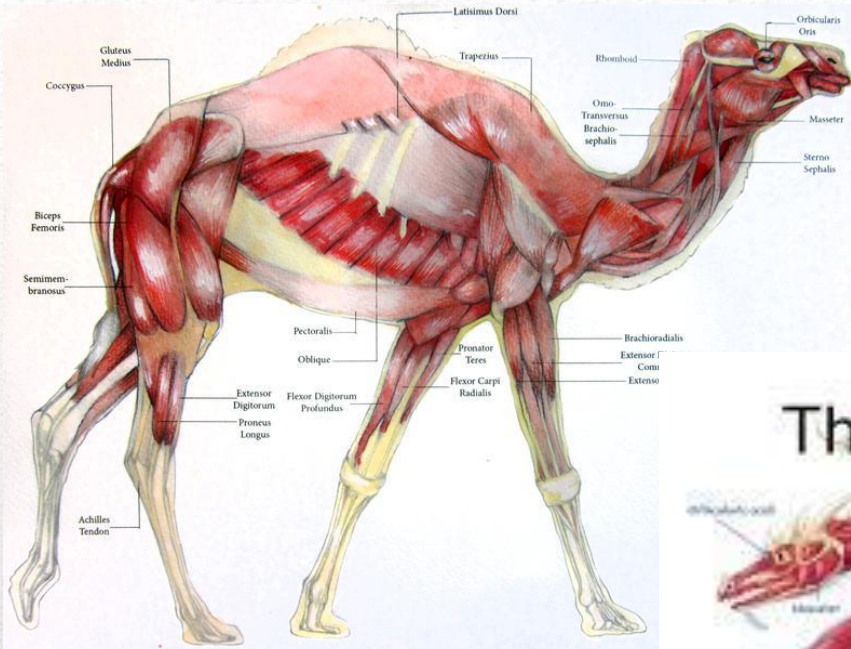
Respiratory System



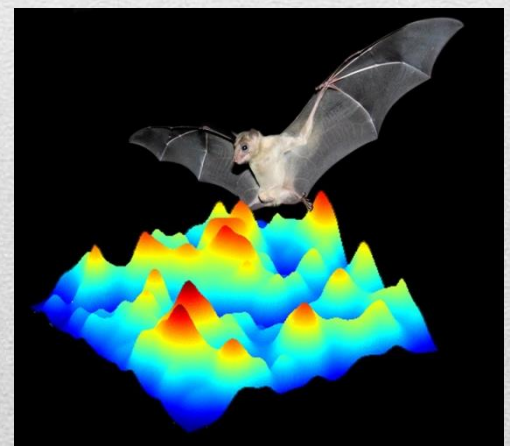
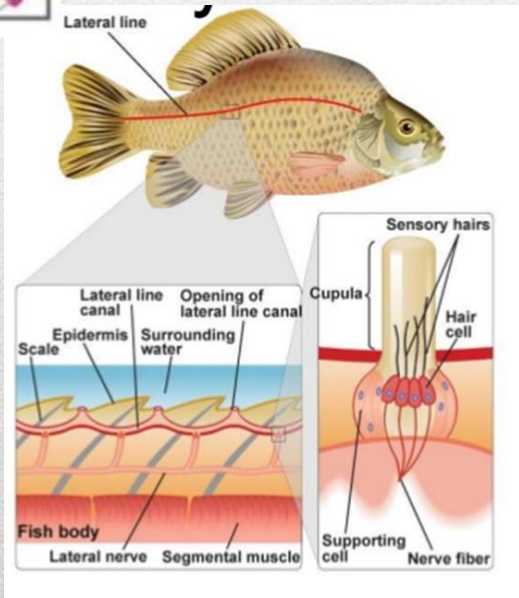
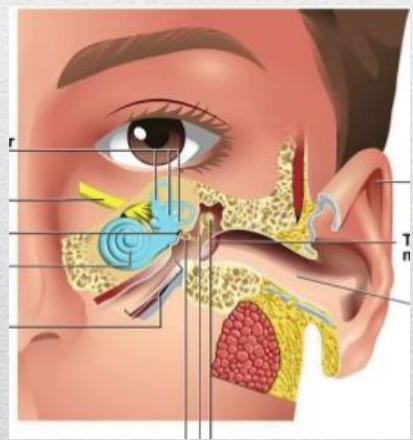
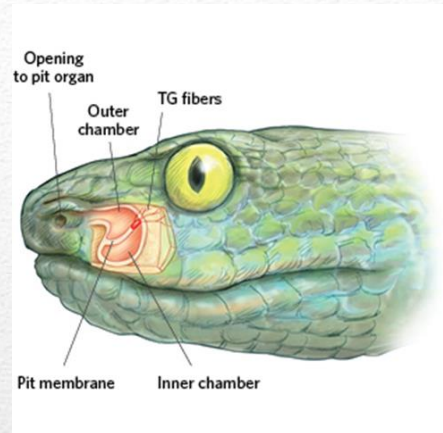
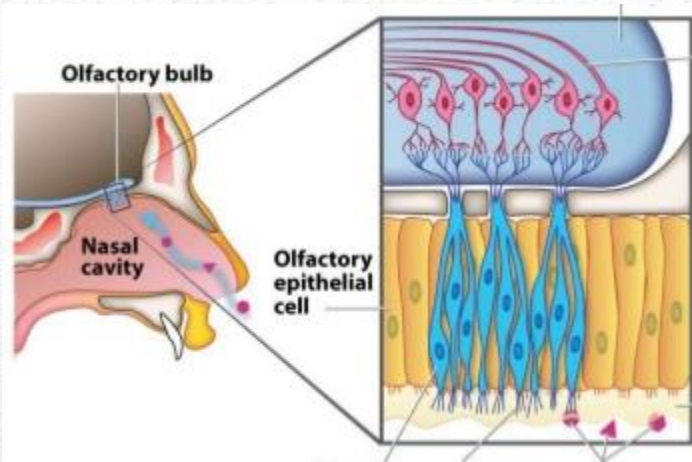
Right Lateral View



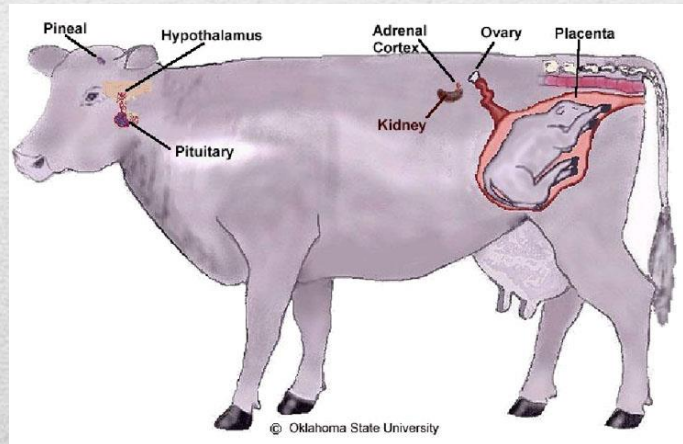
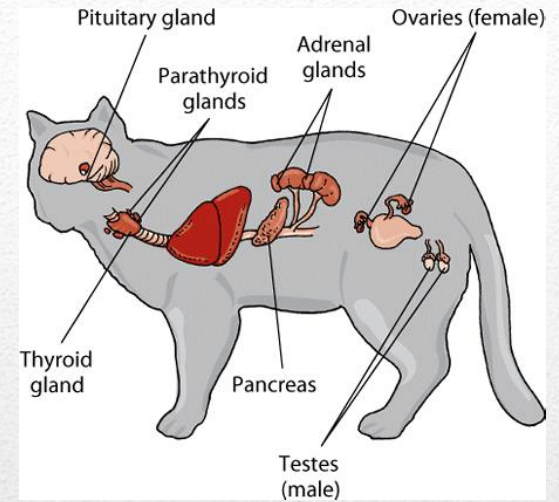
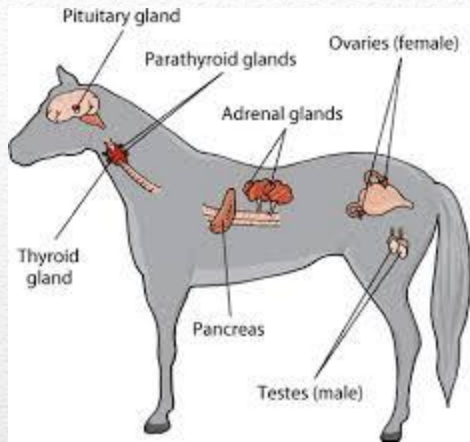
Digestive system



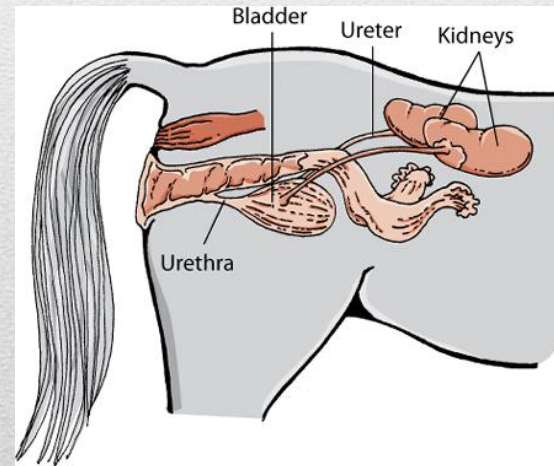
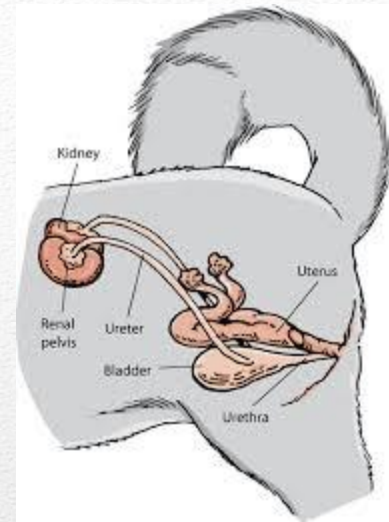
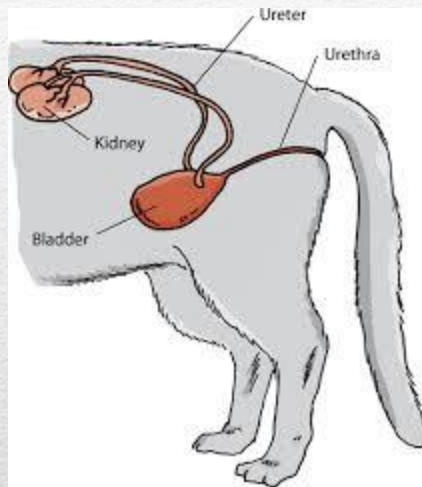
Muscular System



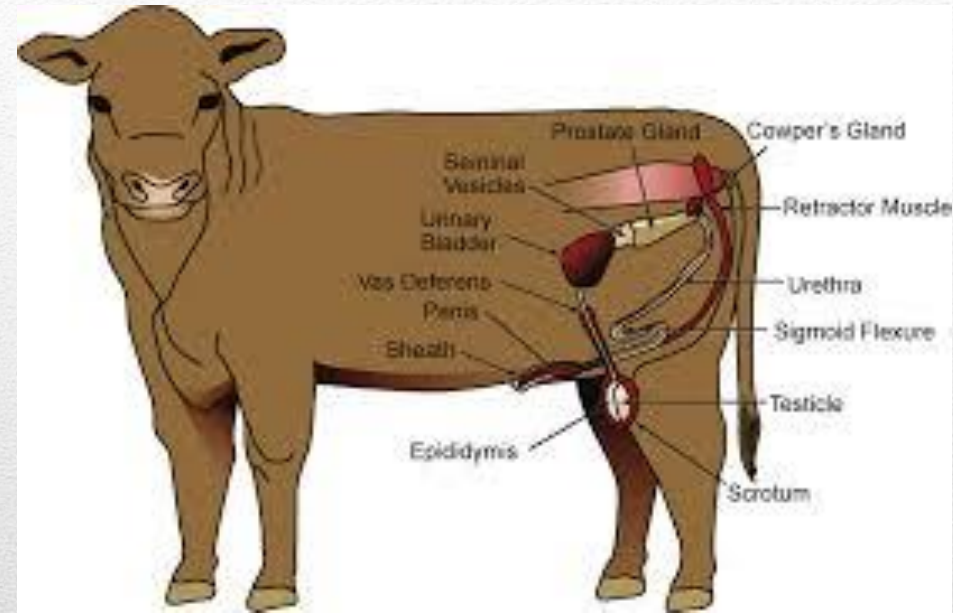
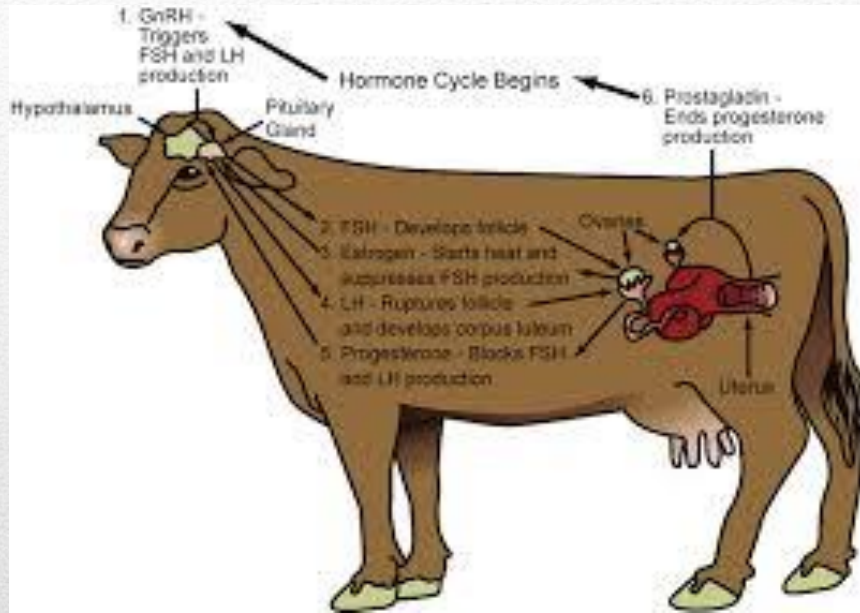
Sensory System




Endocrine System



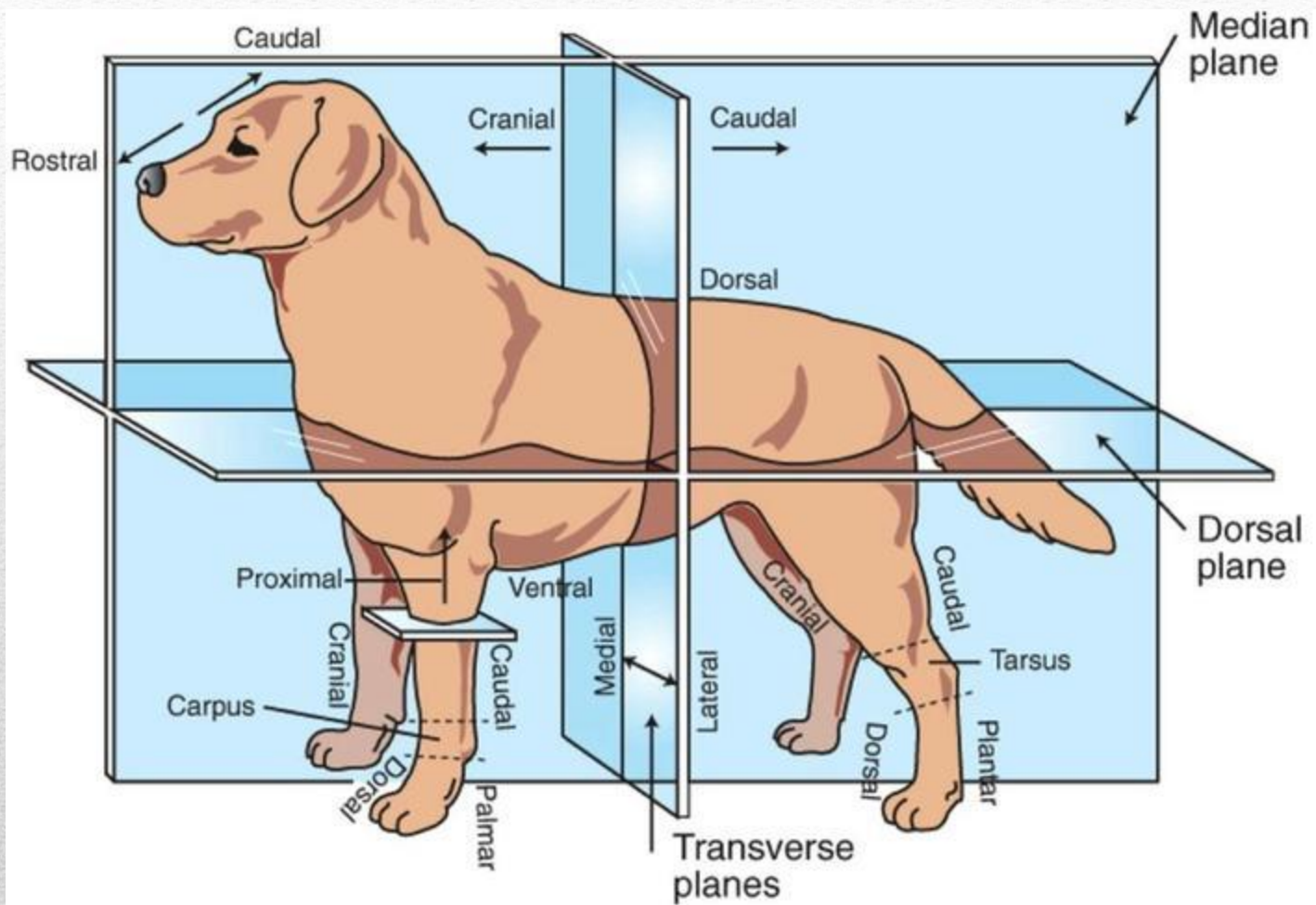
Urinary System

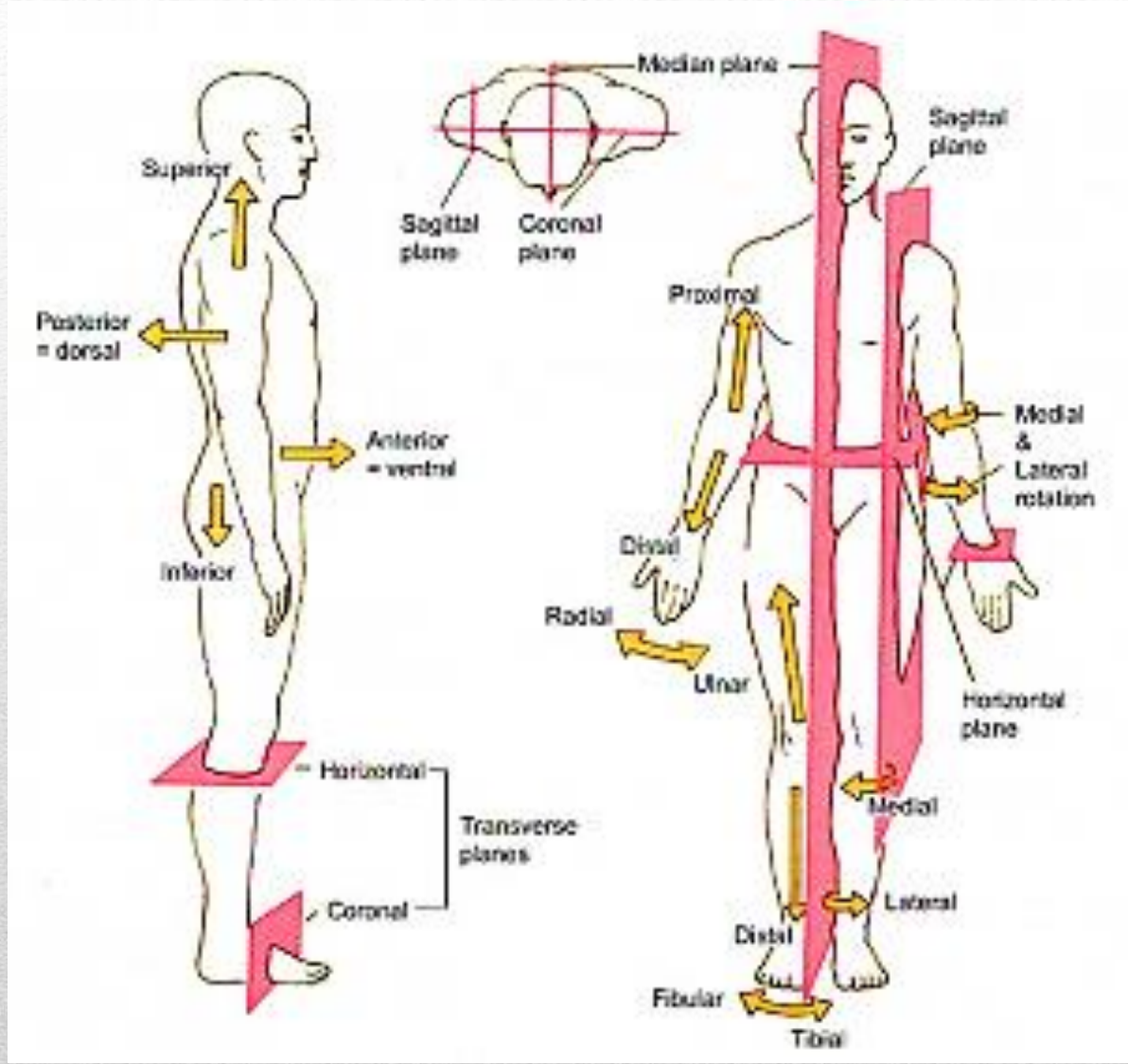


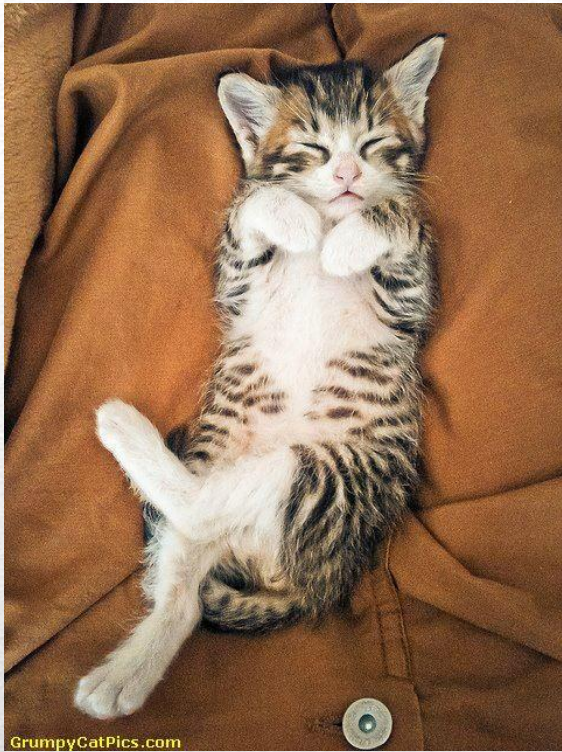
Reproductive System



**WHAT TERMINOLOGY IS USED
TO BE CLEAR AND ACCURATE
WHEN DESCRIBING BODY
PARTS?**

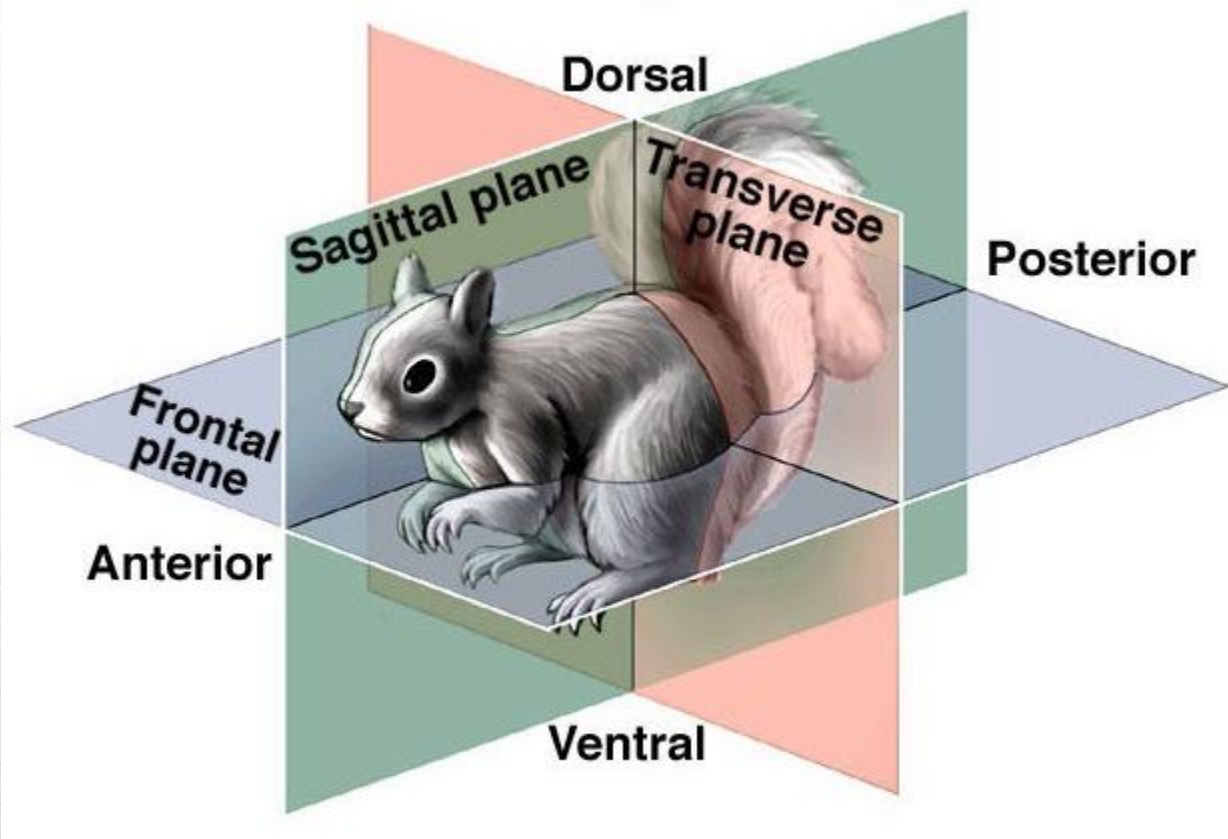




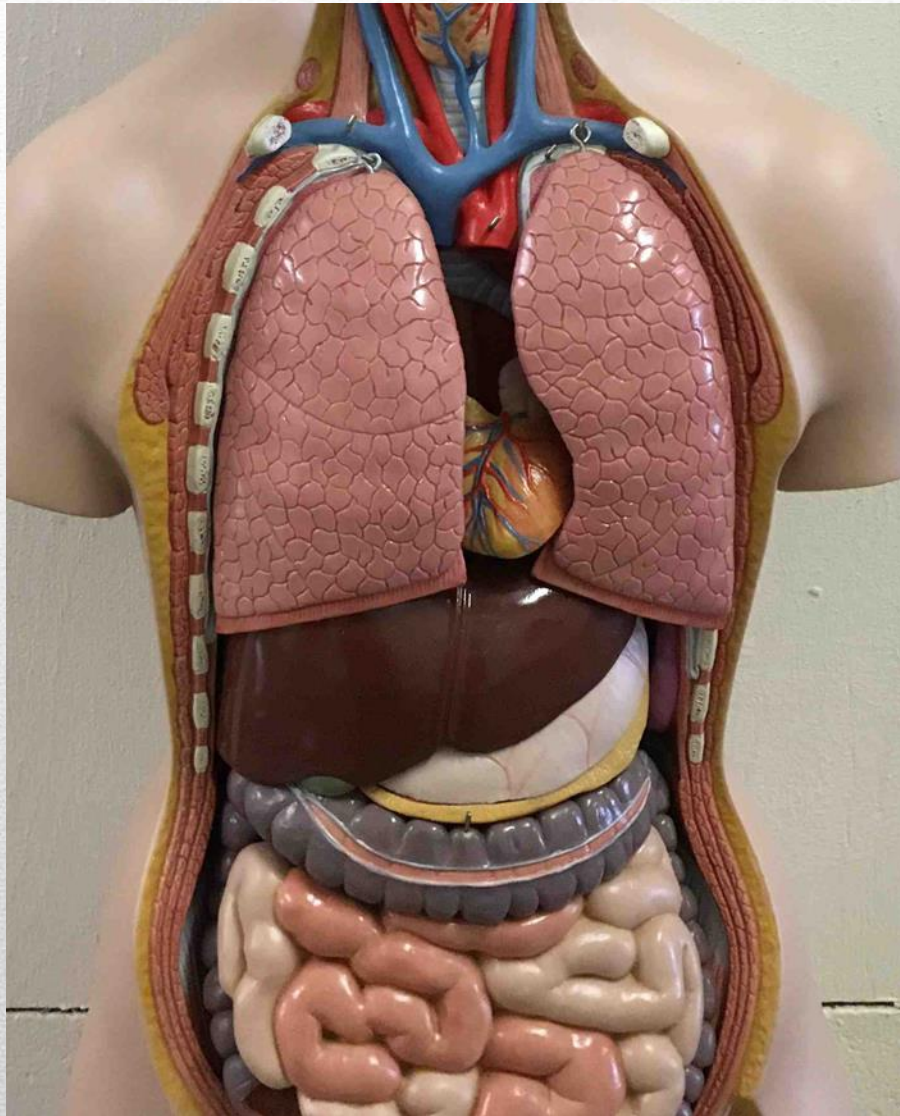




**HOW ARE THE PARTS OF THE
BODY ARRANGED IN GENERAL?**



Bilateral Symmetry



Cranial
Cavity

Spinal
Cavity

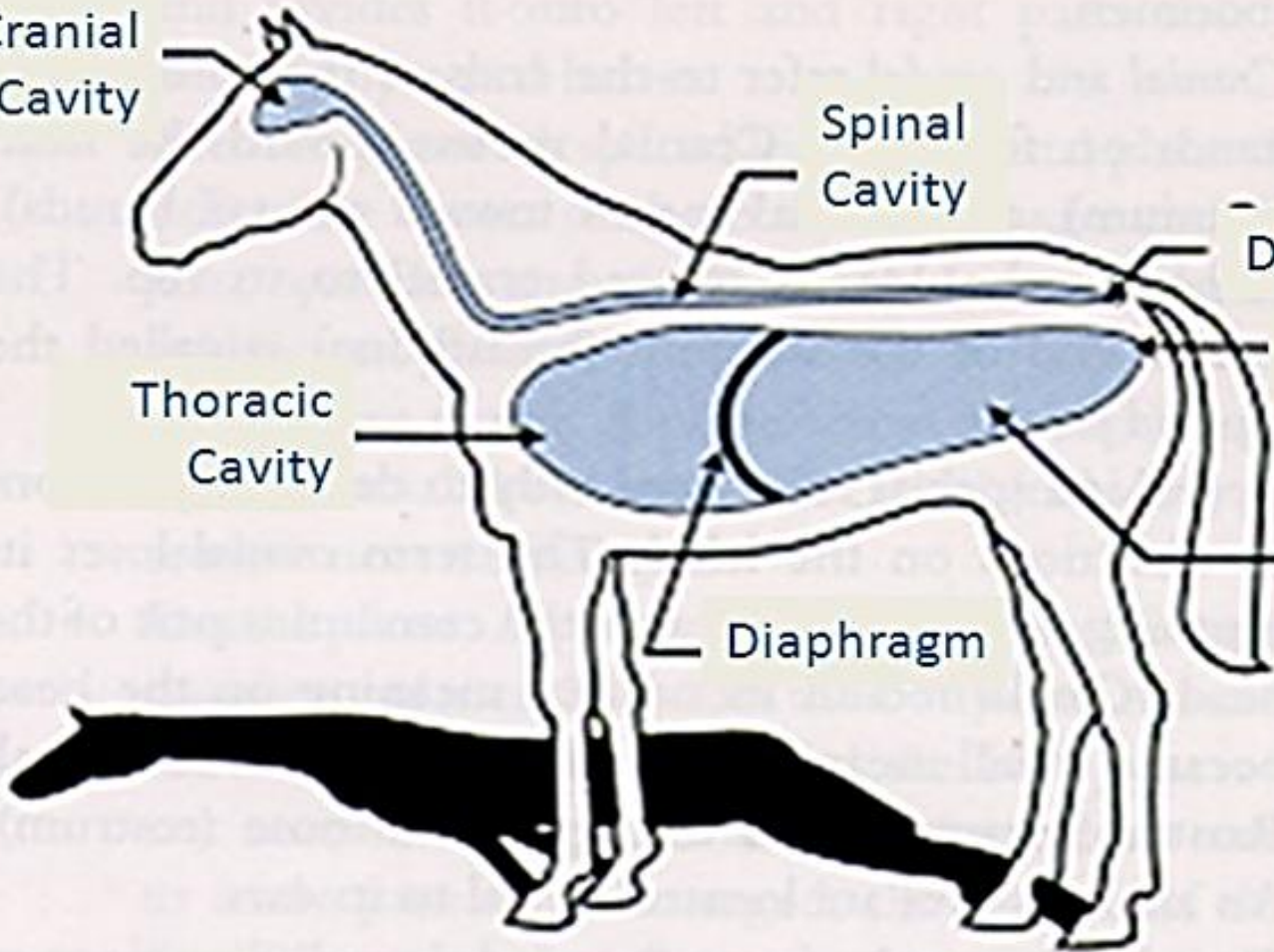
Dorsal Cavity

Ventral Cavity

Thoracic
Cavity

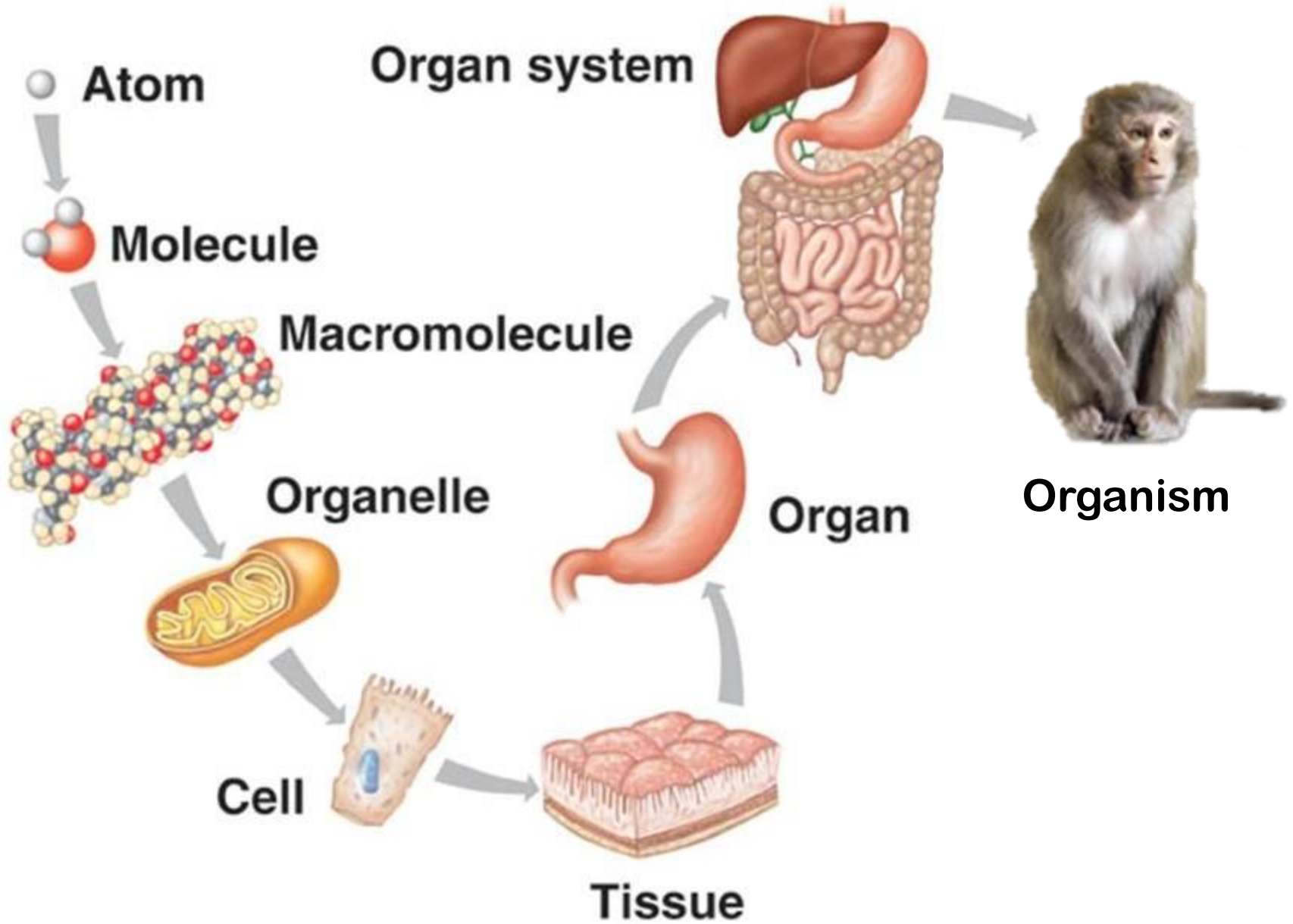
Abdominal
Cavity

Diaphragm



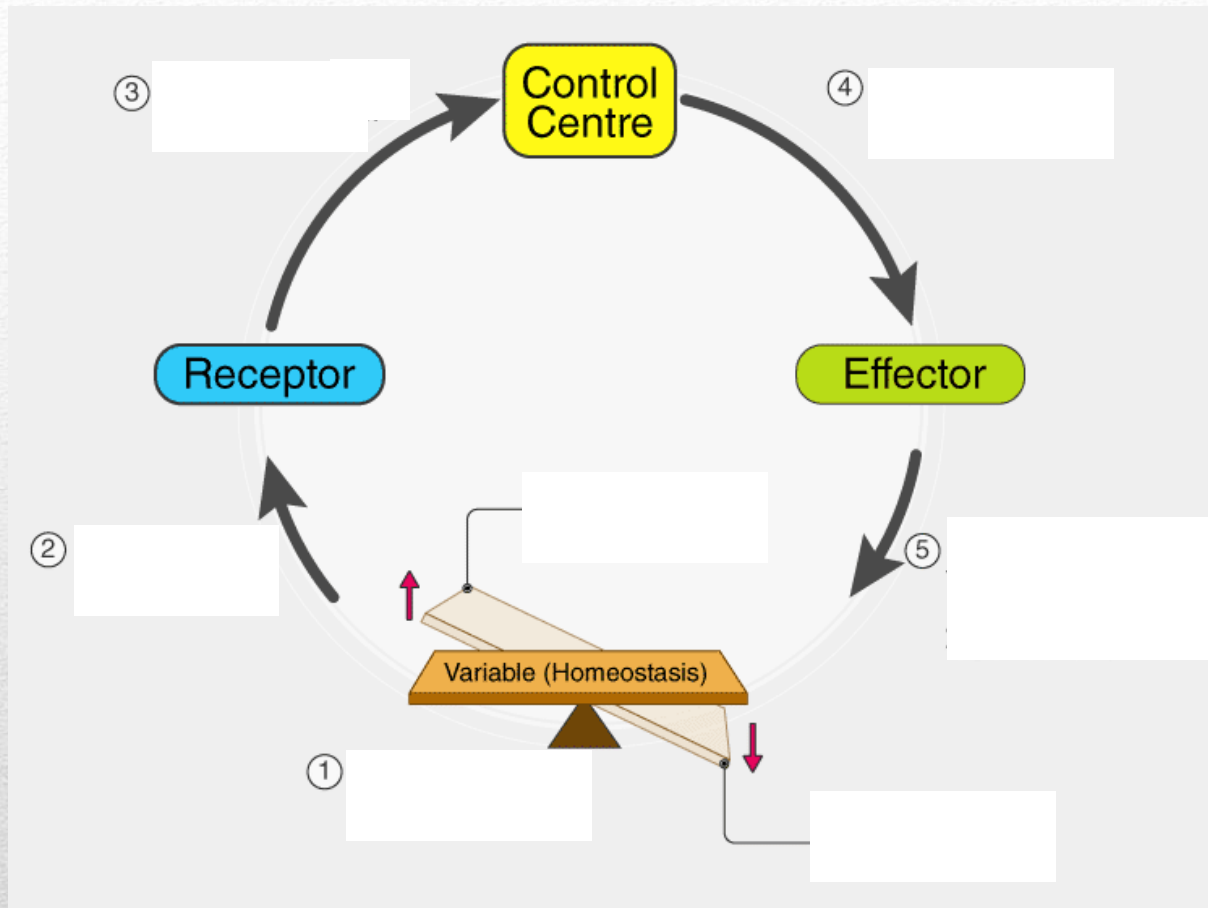


**WHAT LEVELS OF
ORGANIZATION EXIST IN THE
BODY?**





WHAT IS HOMEOSTASIS?



The Great Balancing Act
